

## Status of

# Nutrition Assessment Campaign

Mother Child Wellbeing Partnership Program

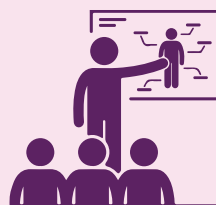
MCWPP or Nurture Every Future: Poshan Nepal supported local government and public health facilities to undertake Nutrition Assessment Campaign across 25 Local Governments (from five program districts) from December 2024 to January 2025 with the objective to actively identify the malnourished children of under 5 and to further support the Government to manage the malnutrition cases. This infographic provides key insights into the Nutrition Assessment Campaign.

### BEFORE ASSESSMENT



25

Signed Memorandum of Understanding (MoU) with Municipalities



25

Municipal Level Orientation  
(Elected representatives, Health care providers, Health officials)



2,237

Orientation to Female Community Health Volunteers

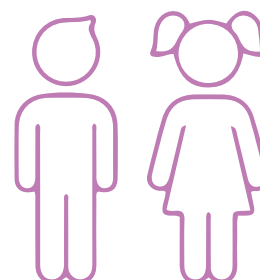
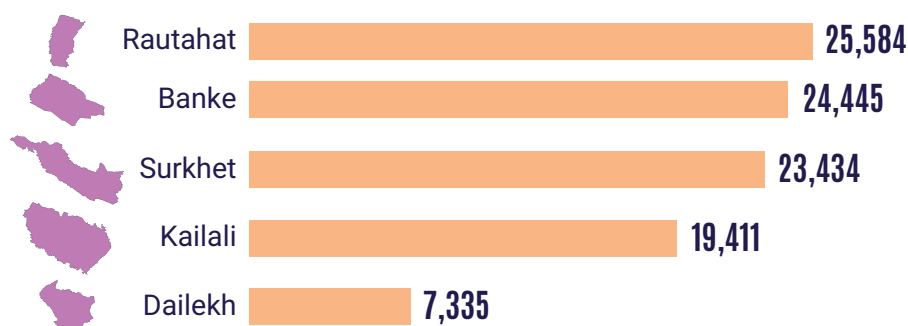


225

Health Facilities Supported with Weight and Height Taking Equipment and Mid-Upper Arm Circumference (MUAC) Tapes

### DURING ASSESSMENT

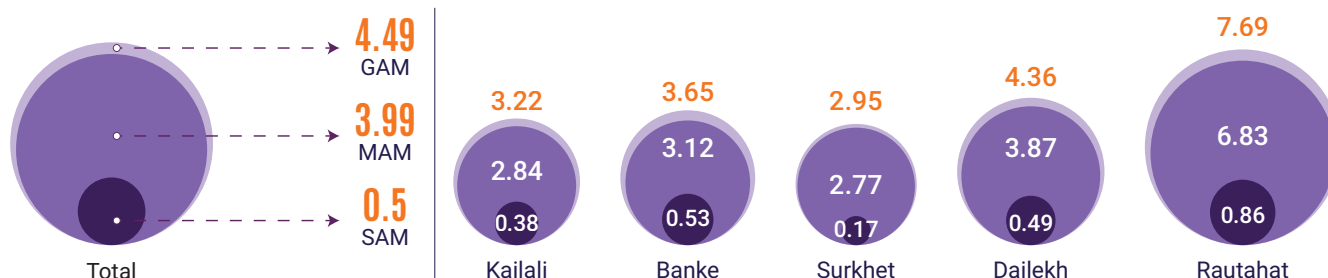
#### Total Children (6 to 59 months) Screened by District



100,209

Total Children who were **Screened** During Nutrition Assessment Campaign

#### Status of Severe and Moderate Acute Malnutrition



\*SAM: Severe Acute Malnutrition; MAM: Moderate Acute Malnutrition; GAM: Global Acute Malnutrition

\*GAM refers to severe and moderate acute malnutrition together

## Status of Severe and Moderate Acute Malnutrition by Sex

5.72%

Girl

3.40%

Boy



Rautahat

6.05%

Dailekh

3.32%

Surkhet

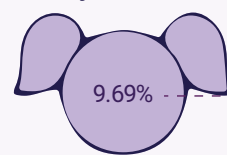
2.45%

Banke

2.43%

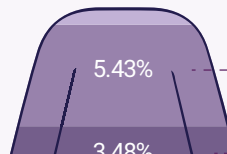
Kailali

2.15%



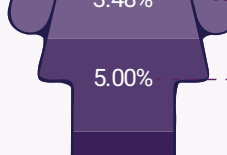
9.69%

Rautahat



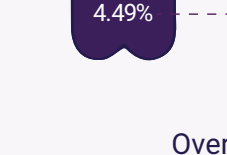
5.43%

Dailekh



3.48%

Surkhet



5.00%

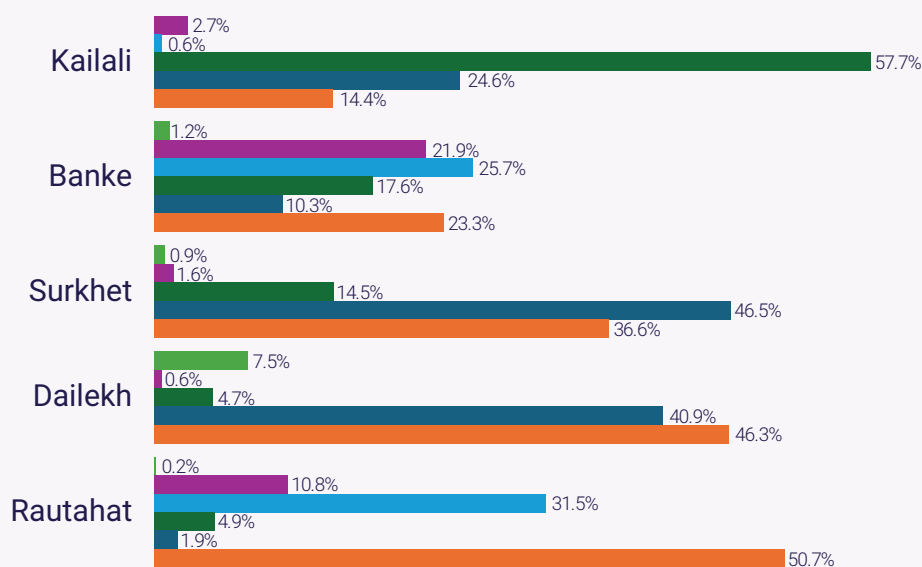
Banke



4.49%

Kailali

## Ethnicity wise Status of GAM



Overall

37.7% Dalit

16.4% Brahmin Chhetri

16.2% Janajati

19% Madeshi

9.7% Muslim

1% Other

## AFTER ASSESSMENT

4,496

HF Level Re-assessment and Counselling of Malnourished Children

4,415

Food Package Supported with Counselling

422 SAM

1,993 MAM

456

Children with SAM Admitted to OTCC

16



Children Admitted to Nutrition Rehabilitation Center

398

Children (84%) with SAM Admitted to OTCC/NRH Recovered

\*Amongst identified cases only

\*Outpatient Therapeutic Care Centers (OTCC)

\*Nutrition Rehabilitation Home (NRH)

## NURTURE EVERY FUTURE: POSHAN NEPAL



care®

iDE



medicine  
for all people