

# THE WORLD SOCIAL FORUM

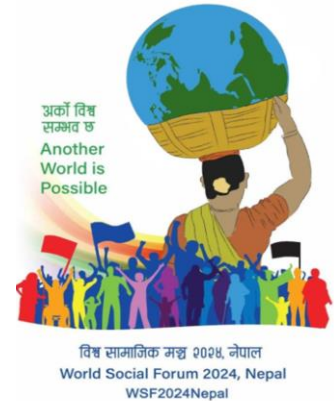
## CARE Nepal mobilizes local partners for greater impact & influence



Another World is Possible

15-19 February 2024

**The World Social Forum (WSF)** takes place this February 15-19, 2024 in Nepal and serves as an open space and platform for the convergence of a diverse range of participants, including social movements, laborers, farmers, civil society groups, marginalized communities, and those affected by the impacts of neoliberal capitalism and privatization. This year's thirteen **themes range from issues of economic inequality, gender-based violence, democratic spaces and human rights to conflict, displacement, and media.**

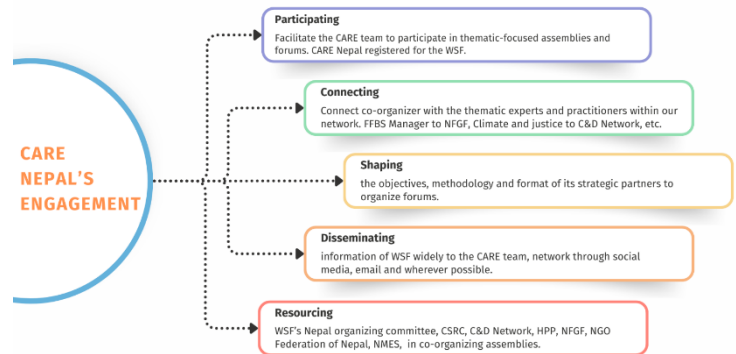


In this space CARE Nepal is steering the CARE Asia's rich expertise by leveraging our local partners advocacy agendas to advance CARE's global commitments towards equitable localization and elevating poverty. **To this end, CARE will be acting as convenor between local partners and regional/global movement organizations, facilitate critical discussions on selected themes advancing our joint advocacy agendas, organize spaces for collaboration, and network with diverse movement organizations to reinforce locally led development efforts.**

**CARE Nepal shapes the debate:** Since October 2023, CARE Nepal has been closely engaging with the National Organizing Committee (NoC) of the WSF 2024 in shaping the framework of this year's debates and strengthen the social movements narrative when addressing issues of injustice, poverty alleviation and accountability. This has galvanized a CARE Asia Regional Team (ARMU) interest under the leadership of CARE Nepal's CD (Mona Sherpa)<sup>1</sup> which also included the provision of financial assistance from ARMU's resources. This has added to CARE's technical expertise and further enabled an equal partnership with the other organizing members.

As such, CARE will be actively represented by **four CARE experts from Nepal, US, Afghanistan, and one local partner from Bangladesh, in addition to the eight Network of Partners members who are also engaged in the organization of seven Forums and events**

- Country Director, CARE Nepal – Mona Sherpa
- Program Manager, Farmer Field and Business School (FFBS) - Shashank Bibhu
- Deputy Country Director Programs, CARE Afghanistan – Reshma Azmi
- Senior Director, Climate Justice, CARE US - Karl Deering



The Network of Partners that CARE has been supporting with coordination and influence strategies during the WSF are:

<sup>1</sup> Muhsin Siddiqui, Deputy Regional Director ARMU; Ramesh Singh, Country Director, CARE Bangladesh; Mona Sherpa, Country Director, CARE Nepal; Alexandra Matei, Regional Advocacy Advisor, Asia; in guidance of Dr. Musa Muhammad, Regional Director, ARMU.

- Community Self-Reliance Center (CSRC)
- Climate Change and Development Network (C&D Network),
- Humanitarian Partnership Platform (HPP)
- National Land Right Forum (NLRF)
- National Farmers Group Federation (NFGF)
- NGO Federation of Nepal
- Nepal Mahila Ekata Samaj (NMES)
- Women's Rehabilitation Centre (WOREC)

## CARE SOLIDARITY TO NETWORK OF PARTNERS

### Nepal Organizing Committee

Institutional Support to organize the WSF

### Global Feminist Forum

To forge a global solidarity for liberty, justice, and gender parity, and empowering collective action to dismantle oppression and realize gender justice worldwide.

### Land and Peace Forum

Promote solidarity around land and livelihood issues through facilitating a learning exchange and organizing a march to draw the attention of policy makers and media to the issues of land and livelihood

### Global Climate Justice Forum

Urgently advocate for climate justice in vulnerable communities, emphasizing the inclusion of mountain concerns in global policies

### DRR and Localization

Facilitate a platform for global policy dialogue on disaster preparedness and DRR localization for effective disaster preparation and response.

### Democracy and Civic Space

To provide a platform for civil society organizations, activists, and human rights defenders to discuss the challenges and opportunities facing civic space globally and in Asia.

### Peasant Forum

Provide a platform for policymakers to engage with small farmers and experts to formulate policies that address the challenges faced by small-scale agriculture and farmers during use of local technology.

### Forum Theater

Play on ending forceful eviction and securing housing rights of informal and squatter settlers