

USAID ADOLESCENT REPRODUCTIVE HEALTH



Photo Credit: CARE Nepal for USAID



BACKGROUND

The Government of Nepal (GoN) formulated and endorsed the National Adolescent Health and Development Strategy (NAHDS) in 2018. The strategy addresses issues and challenges highlighted by the Nepal Demographic and Health Survey (NDHS, 2016). This brings attention to the widespread occurrence of adolescent marriage and pregnancy in Nepal, emphasizing the critical need to establish an atmosphere that promotes beneficial reproductive health practices among adolescents. In 2022, the GoN endorsed the Adolescent Friendly Reproductive Health Services Guidelines.

USAID Adolescent Reproductive Health (ARH) works with federal, provincial, and municipal governments in Madhesh, Lumbini, and Karnali Provinces to improve the reproductive health of adolescents aged 10-19 in Nepal, including marginalized groups. The goal of the program is to support Nepali adolescents to reach their full potential by choosing and practicing healthy reproductive behaviors together with the support of their community members.



SNAPSHOT

Life of Project: 2022-2027

Geographical Focus:

60 municipalities across 11 Districts in 3 Provinces: Madhesh (41), Lumbini (12) and Karnali (7)

Prime Partner: CARE Nepal

Consortium Partners:

HDI, Jhpiego, AYON, Nepal CRS Company

District Partners:

SAC Nepal Surkhet, DDS Salyan, RUDAS Nepal Rolpa, BEE Group Banke, MRDCC Pyuthan, Aasaman Nepal Dhanusha, CNRD Rautahat, BWSN Sarlahi, DDRC Parsha, Protection Nepal Bara, RYC Mahottari

USAID ADOLESCENT REPRODUCTIVE HEALTH

GOAL: TO SUPPORT ADOLESCENTS IN NEPAL TO REACH THEIR FULL POTENTIAL BY CHOOSING AND PRACTICING HEALTHY REPRODUCTIVE BEHAVIORS

APPROACHES



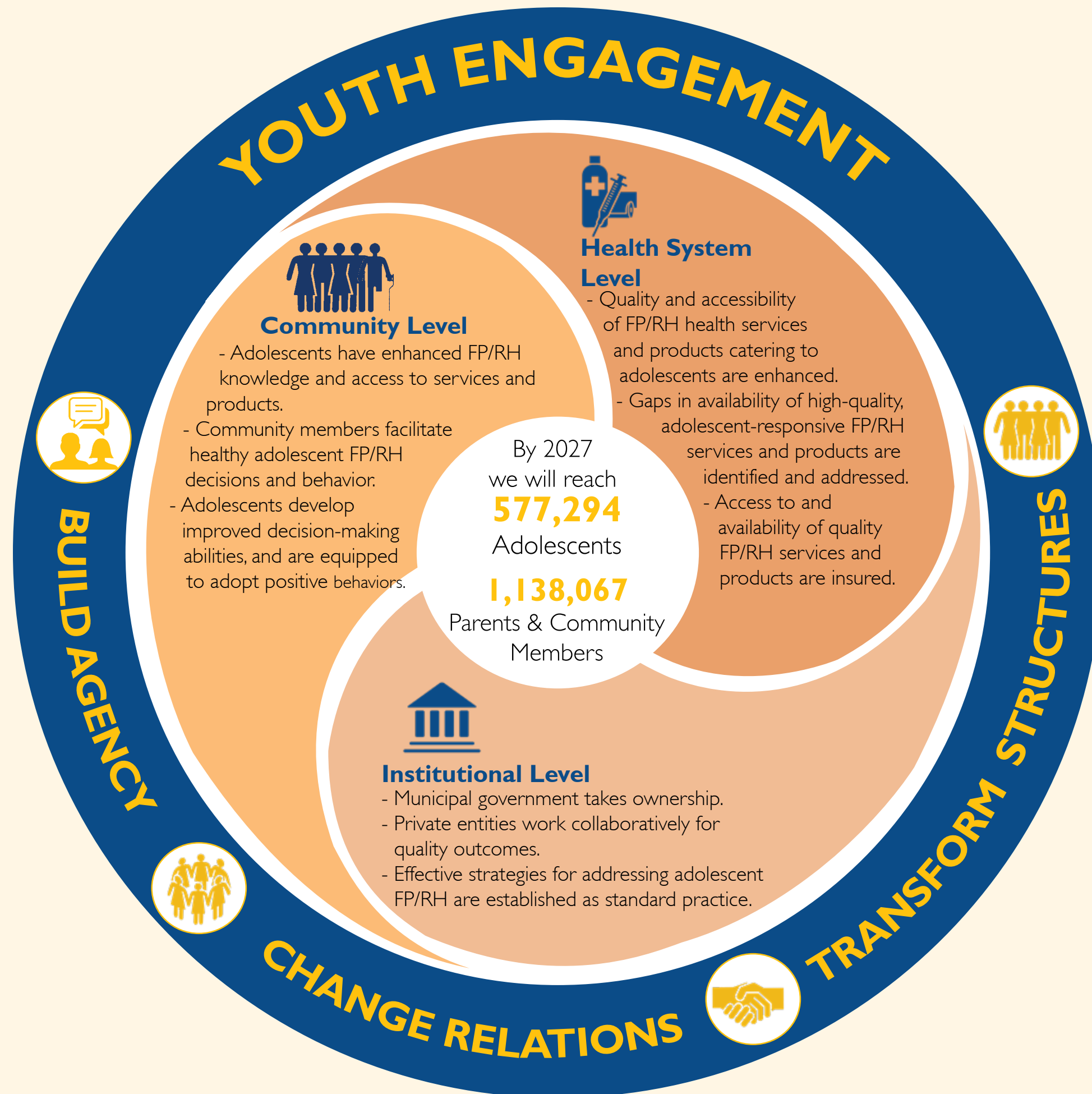
Multichannel Social Behavior Change



Adolescent-responsive Health Service System



Capacity Strengthening



IMPACT



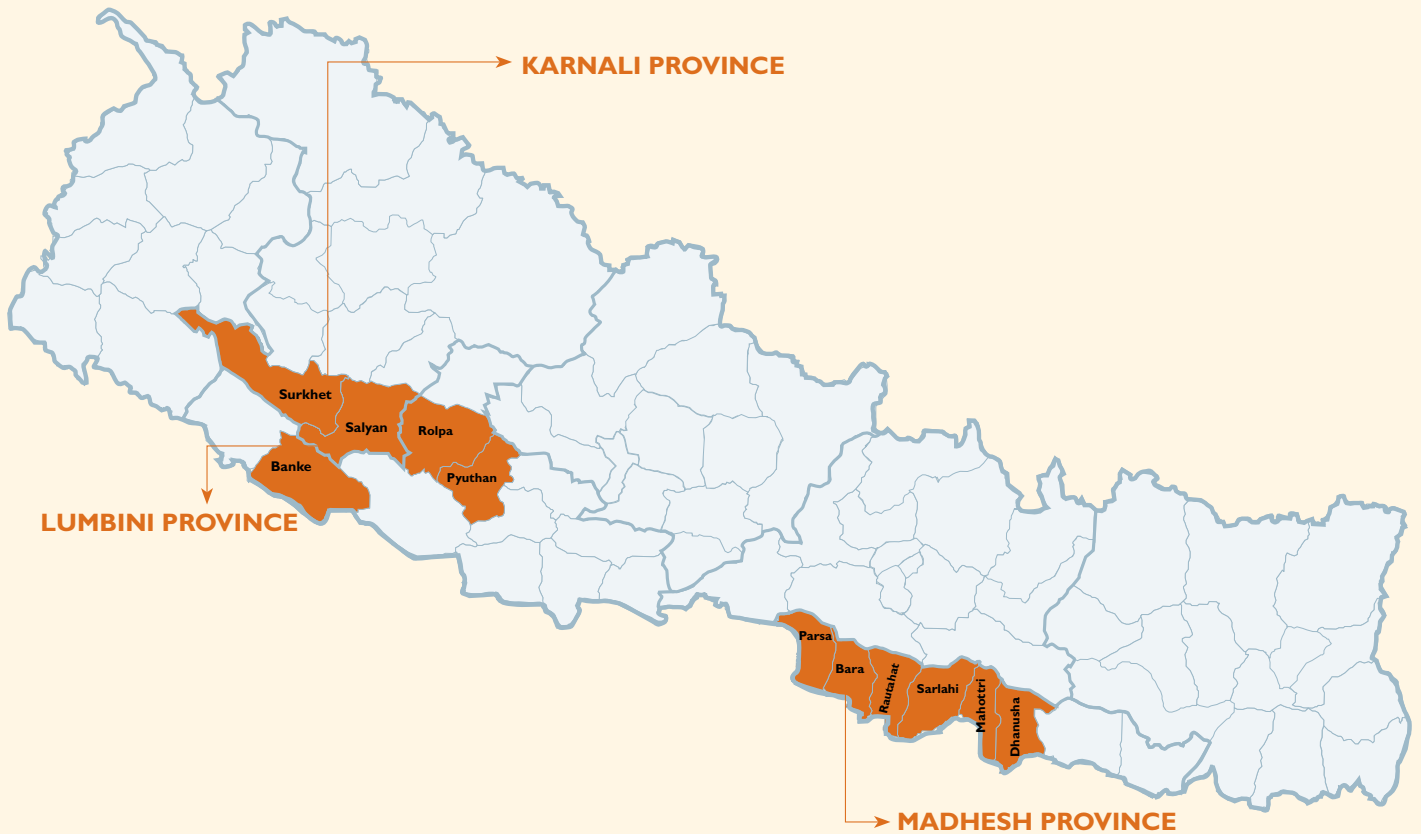
- * Increase in voluntary family planning.
- * Decrease in unintended pregnancies.



- * Improvement in menstrual hygiene.
- * Improvement in healthy timing and spacing of pregnancy.



- * Decrease in child, early and forced marriages.
- * Reduction in school dropouts.



Note: The boundaries and names used on this map do not imply official endorsement or acceptance by the US Government or USAID.

KARNALI PROVINCE

Salyan

1. Sharada M
2. Bagchaur M
3. Bangad Kupinde M

Surkhet

4. Gurbakot M
5. Bheriganga M
6. Lekbeshi M
7. Panchapuri M

LUMBINI PROVINCE

Banke

1. Narainapur RM
2. Duduwa RM
3. Janaki RM
4. Khajura RM

Rolpa

5. Lungri RM
6. Runtigadi RM
7. Rolpa M

Pyuthan

8. Naubahini RM
9. Gaumukhi RM
10. Swargadwari M
11. Pyuthan M
12. Jhimruk RM

MADHESH PROVINCE

Bara

1. Pacharauta M
2. Kalaiya, sub-metropolitan city
3. Suwarna RM
4. Mahagadhimai M
5. Simrourngadh M

Dhanusha

6. Sahidnagar M
7. Ganeshman Charnath M
8. Kamala M
9. Hansapur M
10. Mithila Bihari M
11. Chhireswornath M
12. Sabaila M
13. Dhanushadham M

Mahottari

14. Aurahi M
15. Balawa M
16. Ram Goplapur M
17. Bhangaha M
18. Sonama RM
19. Loharpatti M
20. Samsi RM
21. Gaushala M

Parsa

22. Pokhariya M
23. Bahudarmai RM
24. Jagarnathpur RM
25. Parsagadhi M

Rautahat

26. Katahariya M
27. Gajura M
28. Garuda M
29. Dewahi Gonahi M
30. Brindaban M
31. Madhav Narayan M
32. Gadhimai M
33. Phatuwa Bijayapur M

Sarlahi

34. Kabilashi M
35. Chandranagar RM
36. Haripur M
37. Haripurwa M
38. Ishworpur M
39. Barahathawa M
40. Brahmapuri RM
41. Malangawa M

(M= Municipality and RM= Rural Municipality)

CONTACT Suzanne Reier, Chief of Party, USAID ARH, Suzanne.reier@care.org



Disclaimer: This document is made possible by the generous support of the American people through the United States Agency for International Development (USAID). The contents of this document are the sole responsibility of CARE Nepal and do not necessarily reflect the views of USAID or the United States Government.